

# GEO: Forensics: When and where do contaminants enter Shingle Creek?

1

Ex. Oil Spill



J. M. Kang, S. Shekhar, C. Wennen, and P. Novak,  
Discovering Flow Anomalies: A SWEET Approach, IEEE Intl. Conf. on Data Mining, 2008.  
Ack: NSF IGERT, CISE/IIS/III, USDOD.

## GEO: Forensics: When and where do contaminants enter Shingle Creek?

### Ex. Oil Spill



(HydroLab sensor)



J. M. Kang, S. Shekhar, C. Wennen, and P. Novak,  
Discovering Flow Anomalies: A SWEET Approach, IEEE Intl. Conf. on Data Mining, 2008.  
Ack: NSF IGERT, CISE/IIS/III, USDOD.

# GEO: Forensics: When and where do contaminants enter Shingle Creek?

Ex. Oil Spill



(HydroLab sensor)



J. M. Kang, S. Shekhar, C. Wennen, and P. Novak,  
Discovering Flow Anomalies: A SWEET Approach, IEEE Intl. Conf. on Data Mining, 2008.  
Ack: NSF IGERT, CISE/IIS/III, USDOD.

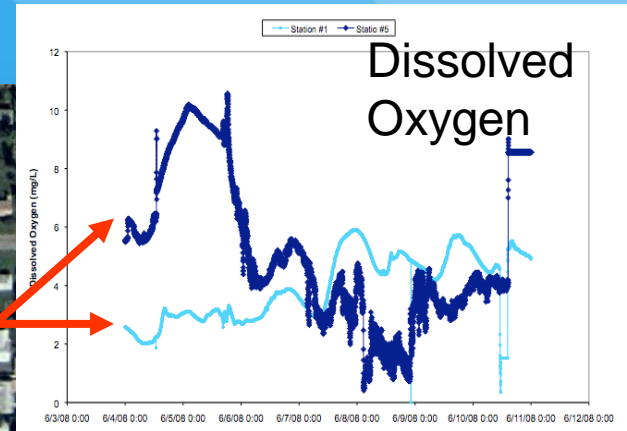
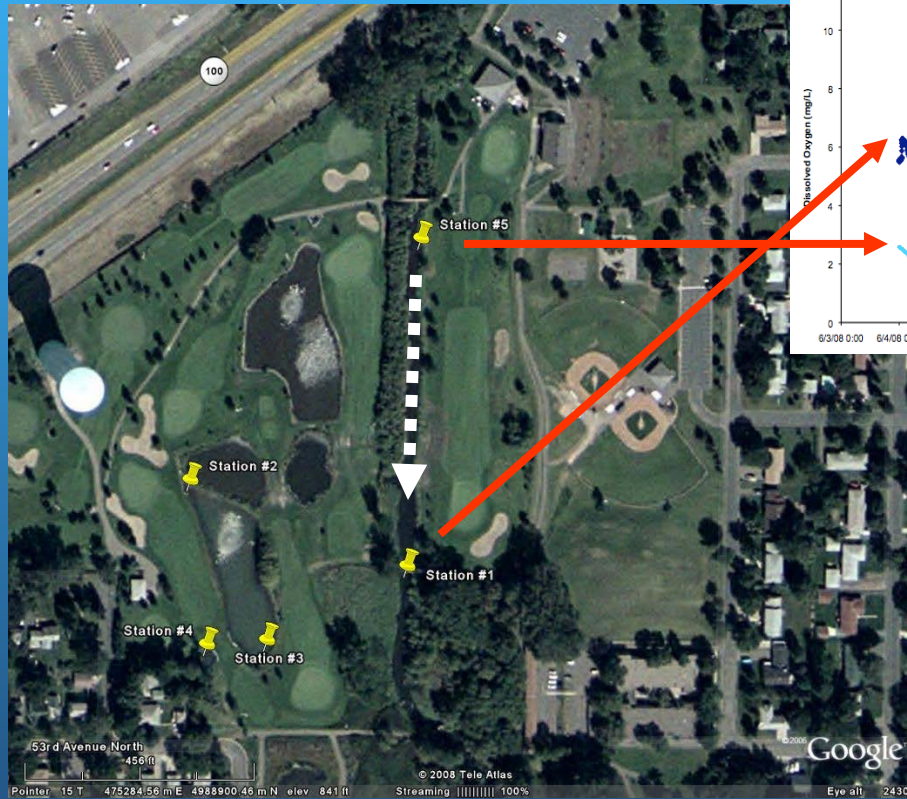
# GEO: Forensics: When and where do contaminants enter Shingle Creek? CISE/IIS: Scalable detection of spatio-temporal hot-spots & co-occurrences (Shashi Shekhar, Kirk Borne, Craig Knoblock)

Ex. Oil Spill



Chronicle / Kurt Rogers

(HydroLab sensor)



J. M. Kang, S. Shekhar, C. Wennen, and P. Novak,  
Discovering Flow Anomalies: A SWEET Approach, IEEE Intl. Conf. on Data Mining, 2008.  
Ack: NSF IGERT, CISE/IIS/III, USDOD.

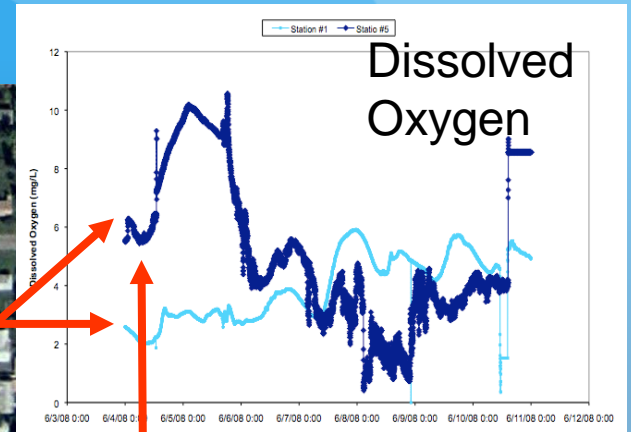
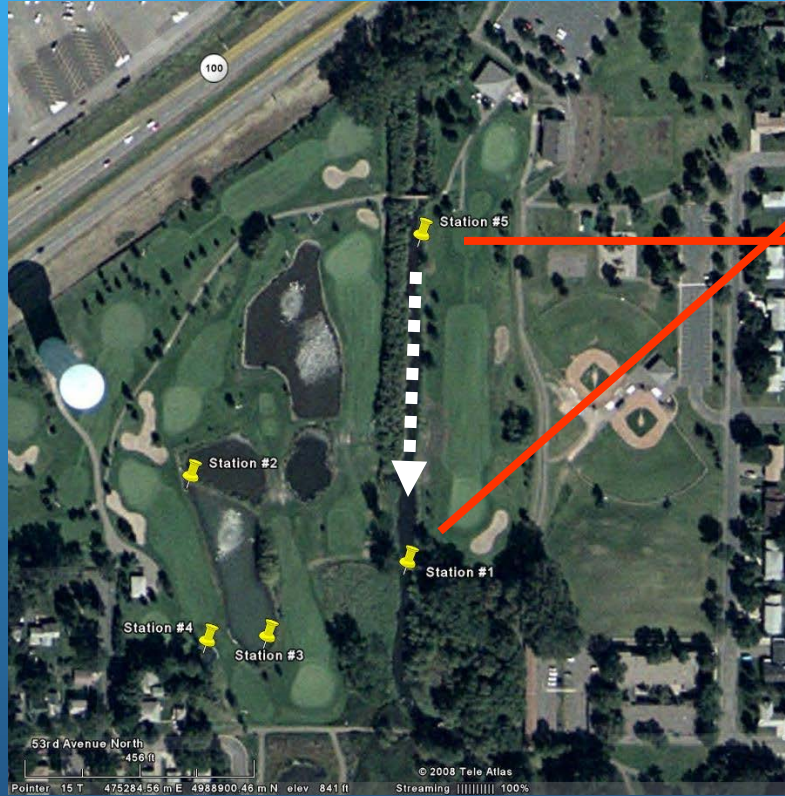
# GEO: Forensics: When and where do contaminants enter Shingle Creek? CISE/IIS: Scalable detection of spatio-temporal hot-spots & co-occurrences (Shashi Shekhar, Kirk Borne, Craig Knoblock)

Ex. Oil Spill

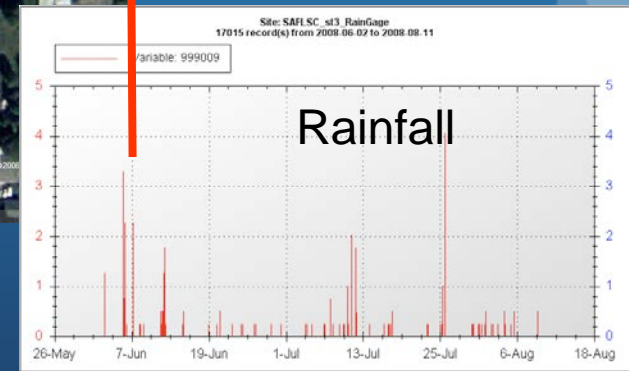


Chronicle / Kurt Rogers

(HydroLab sensor)



After consecutive heavy rain events



J. M. Kang, S. Shekhar, C. Wennen, and P. Novak,  
Discovering Flow Anomalies: A SWEET Approach, IEEE Intl. Conf. on Data Mining, 2008.  
Ack: NSF IGERT, CISE/IIS/III, USDOD.

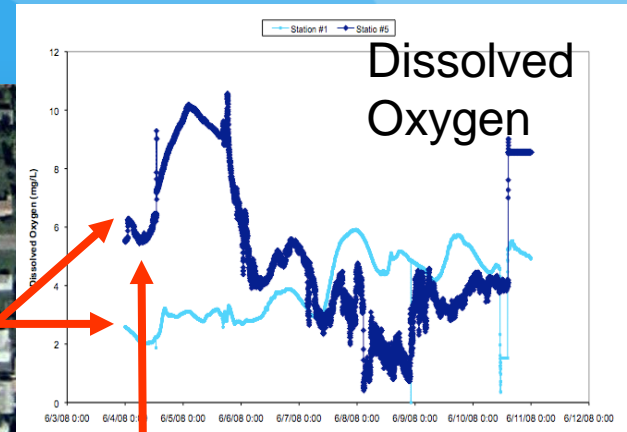
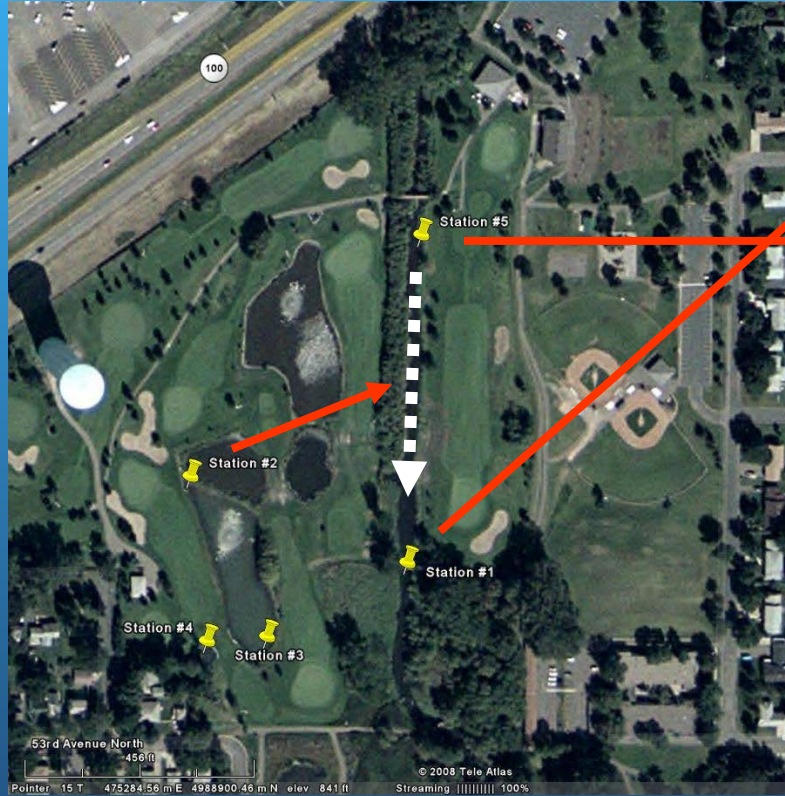
# GEO: Forensics: When and where do contaminants enter Shingle Creek? CISE/IIS: Scalable detection of spatio-temporal hot-spots & co-occurrences (Shashi Shekhar, Kirk Borne, Craig Knoblock)

Ex. Oil Spill



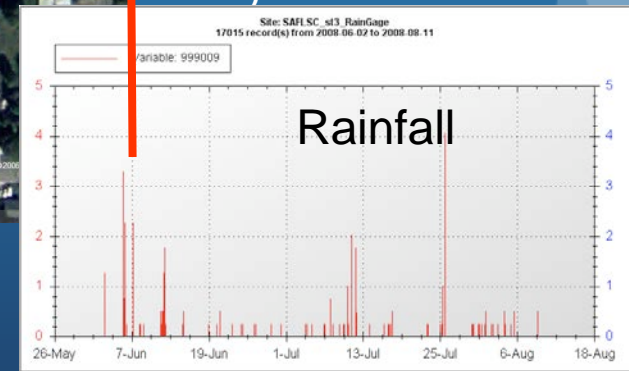
Chronicle / Kurt Rogers

(HydroLab sensor)



Flow anomaly

After consecutive heavy rain events



J. M. Kang, S. Shekhar, C. Wennen, and P. Novak,  
Discovering Flow Anomalies: A SWEET Approach, IEEE Intl. Conf. on Data Mining, 2008.  
Ack: NSF IGERT, CISE/IIS/III, USDOD.